



Imagine a Community .....



Where  
Elders are  
Revered for  
their  
Knowledge,  
Wisdom,  
and Sense of  
Humor



Where Children are  
Respected for their Ability  
to Love Unconditionally



Where the Focus is on Abilities not  
disAbilities



Where Guides are Visionaries



Welcome to the Utah Montessori Intergenerational Project

*An Inclusive Home for, Elders, the disAbled,  
and their Preschool Friends*

# Did You Know That...

Every day in the U.S., **10,000 people** turn 65, and the number of older adults will more than double over the next several decades to top 88 million people and represent over 20 percent of the population by 2050.

In 2050 the population of people over 80 will triple what that population is today



In Utah 4,000+ adults with disabilities are waiting for supportive housing.



Adults with disabilities  
can wait between 5-20  
years for substandard  
housing.

*This is Unacceptable!*

## Lawsuit accuses Utah agencies of segregating, isolating disabled adults in care facilities

[ksl.com/article/46238021/lawsuit-accuses-utah-agencies-of-segregating-isolating-disabled-adults-in-care-facilities](https://www.ksl.com/article/46238021/lawsuit-accuses-utah-agencies-of-segregating-isolating-disabled-adults-in-care-facilities)

McKenzie Romero, Deseret News



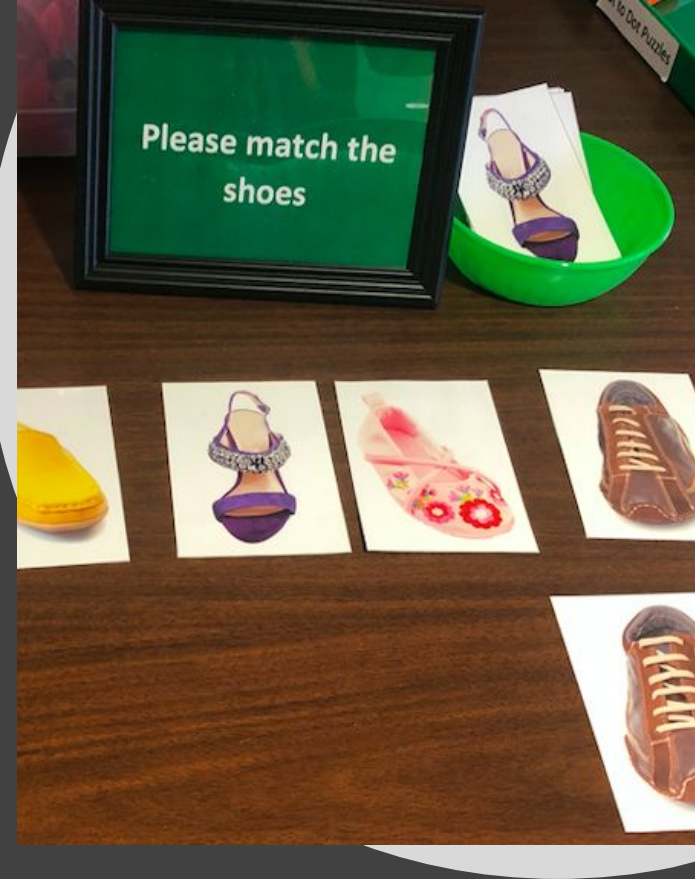
By McKenzie Romero, Deseret News | Posted - Jan. 15, 2018 at 5:20 p.m.

Image credit: KSL News

\*The state agreed to transition 250 individuals out of care facilities over the next five years to settle the suit



The Montessori Method of Education Benefits Everyone



The use of the Montessori method and materials are being utilized with great success in Elder care settings.

# Best Practices in Elder Care....Montessori

Person-centered Care

Respect for Every  
Individual

Hands- on Experiences

Interest- based  
Opportunities

The Prepared  
Environment

Honoring the Elders  
Preferences

Freedom of Movement

Focus on the Well-Being  
of the Whole  
Person-Physical,  
Emotional, Social,  
Spiritual, and Mental  
Needs.



## Children and Young Adults

# Benefits for Elders in a Montessori Intergenerational Community

---

- Improved cognition
- Better physical health
- Decrease in loneliness and isolation
- Willingness to engage in new activities
- Enhanced dignity and self-esteem
- Opportunities to mentor others
- Retention of communication skills
- New sense of purpose
- Greater joy in life





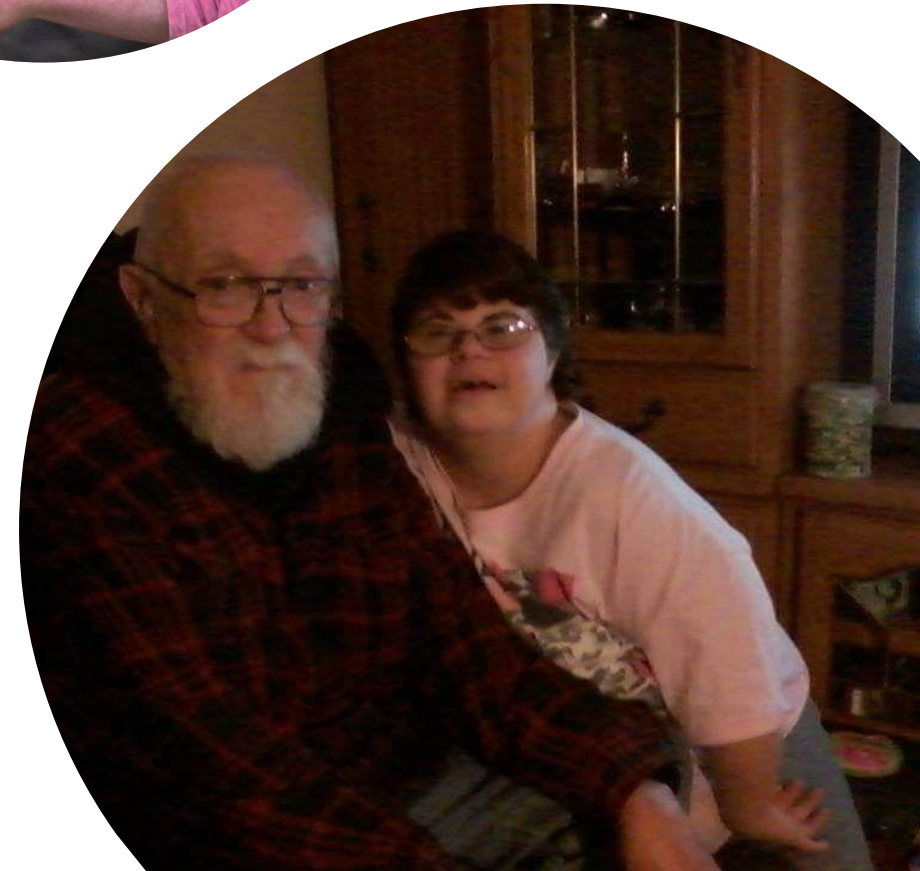
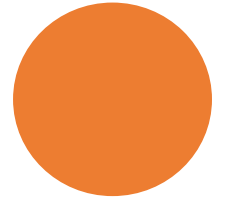
# Benefits for Children

---

- Enhanced development of language skills
- Development of empathy and understanding across the generations
- Reduction of age stereotypes will improve the behavior that children show towards older people in general.
- Greater emotional security and love
- Activities and experiences that are developmentally appropriate and that encourage friendships
- Improves prosocial behaviors of sharing, helping and cooperating
- Decreases likelihood of juvenile offences

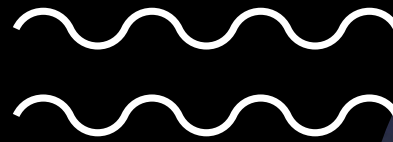
# Benefits for Adults with Disabilities

- Vocational skill development
- Nurturing social skills
- Development of life skills needed for independent living
- Paid vocations within the community
- Opportunity to contribute to those around them

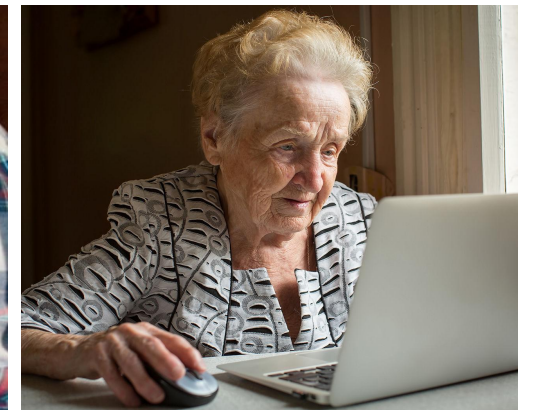




"The essence of independence is to be able to do something for oneself"  
- Maria Montessori



"In order to  
keep up with  
evolving  
humanity,  
education  
should  
continue  
throughout  
life."  
- Maria  
Montessori





The Small  
Home Model

The  
Prepared  
Environment



# Survey Results from Residents of Small Home Residential Settings

## Improved Quality of Life:

- Autonomy, dignity, privacy, meaningful activity, sense of individuality, emotional well-being, and enjoyment of food.

## Improved Quality of Care:

- Residents maintain self-care abilities longer and daily living activities
- Fewer residents have depression, are bedfast, get little or no activity, have avoidable hospitalizations.

# Greatest Concerns for Caregivers Providing Long-term Care

Lack of Individual  
Attention –  
83%

Isolation-  
82%

An Institutional  
Atmosphere-  
82%

Loss of  
Independence-  
80%

When familiarized with the small home model and research, 97% of caregivers believed this model would address their greatest concerns.

Kane R, Cutler L, et al.  
“Resident Outcomes in Small-House Nursing Homes: A Longitudinal Evaluation of the Initial Green House Program.”  
Journal of American Geriatric Society, June 2007

Community  
Opportunities  
that Will  
Empower  
Members of  
Our Team

Cross  
training for  
Montessori  
Preschool  
Co-teacher

Cross training  
for  
Certified  
Nursing  
Assistant



What's Next???





**FEASIBILITY** **STUDY** **PROJECT** **EVALUATION** **ANALYSIS** **COST** **RESEARCH** **IMPLEMENTATION** **LEGAL** **BUSINESS** **DESCRIPTION** **FINANCE** **ECONOMIC** **INVESTIGATION** **FACTORS** **MANAGEMENT** **OPERATIONS** **DECISION** **DEVELOPMENT** **VALUE** **MARKETING** **SCHEDULING** **RESOURCES** **TECHNICAL** **PROPOSED**

A Two-Phase  
Market  
Feasibility  
Analysis by  
PMD Advisory  
Services

- To determine market support for a campus offering **assisted living, memory care**, and **skilled nursing** in residences following the **Small Home Model**
- A **Montessori Preschool** will be located at the heart of the campus
- Housing a suitable jobs will also be provided for **adults with cognitive disabilities**
- The project will be in an area yet to be determined, most likely north of Salt Lake City



This Photo by Unknown Author is licensed under [CC BY-SA-NC](#)

## Who is PMD Advisory Services?

PMD Advisory Services is a national market research and consulting firm with clients in over 600 different geographic markets in the US, Canada, Puerto Rico and Australia.

PMD provides answers, insights, and strategic solutions to their clients in the 55+ senior living market.

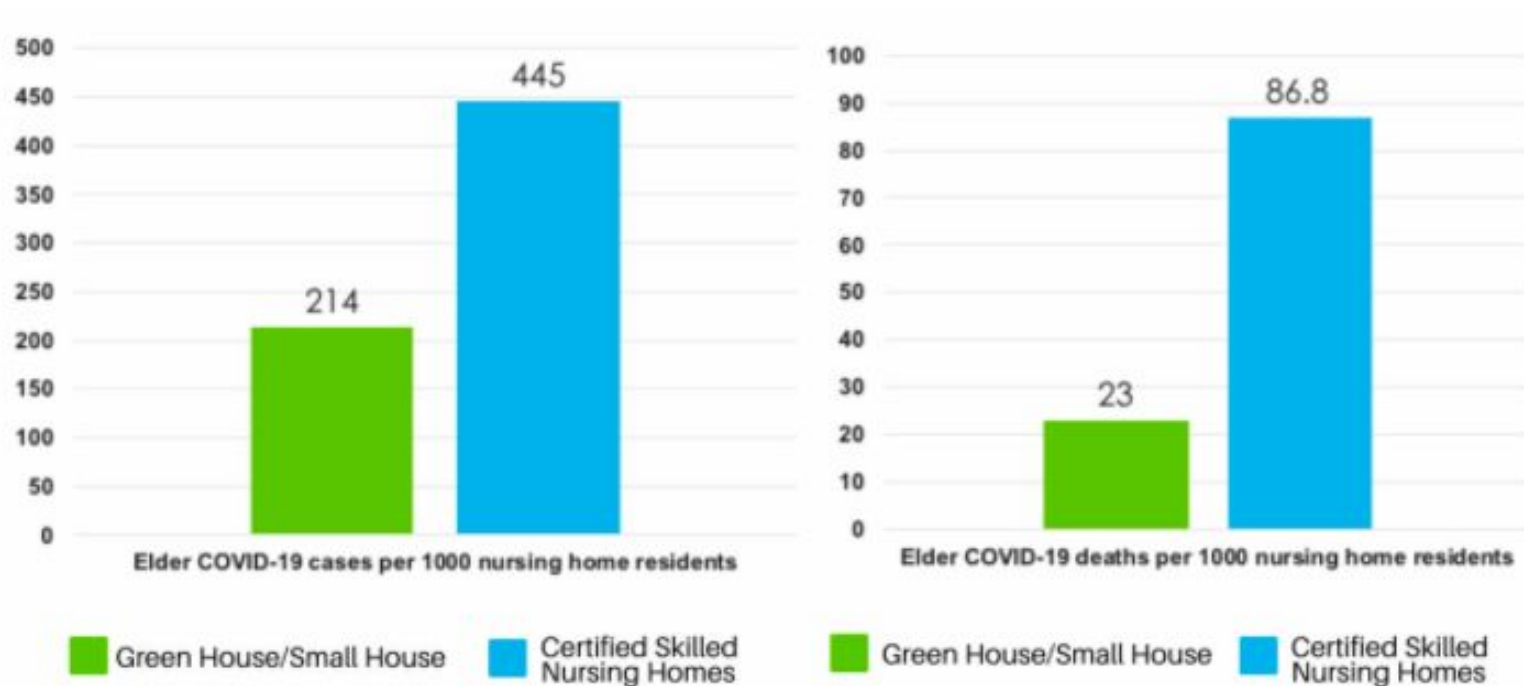
For 30+ year, their clients have benefited from their guidance in handling detailed market feasibility studies, advisory services, and strategic planning services.

The result is better strategic decisions in a dynamic marketplace.

The final report will be utilized in support of our major financing requests.

# WE MUST PAY ATTENTION TO THIS

COVID-19 Cases & Deaths in Green House Skilled Nursing Homes Compared to CMS Data (Jan 1 to Dec. 27, 2020)





Where will YOU and YOUR  
loved ones live in YOUR elder  
years?

Please join us in this  
venture...

Share our **Go Fund Me**  
account with your  
contacts and friends.

For more information:  
Nancy Lindeman –  
[nolindeman@gmail.com](mailto:nolindeman@gmail.com)

